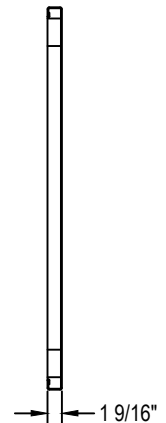
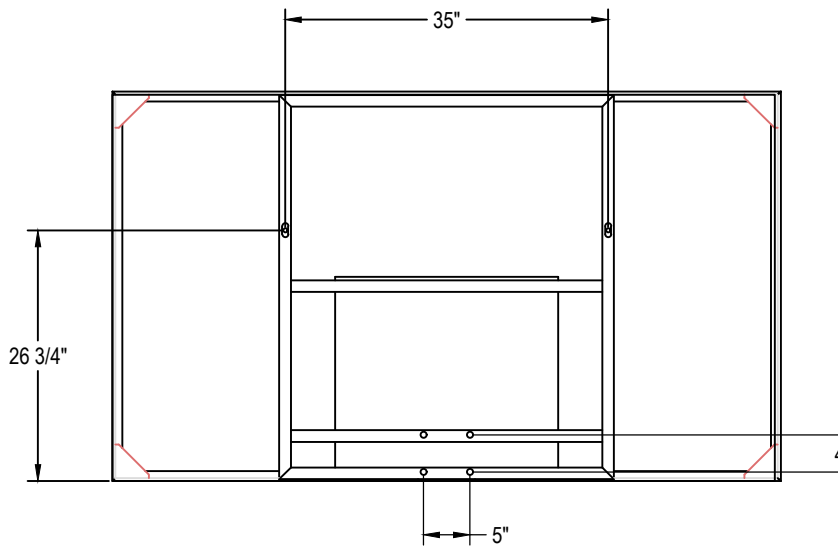


FRONT



SIDE



REAR

Backboard shall be 42" x 72" rectangular steel. Skin shall be 12 ga. and rear structure shall be 7 ga. and 10 ga. mild steel. All skin edges shall be safety rolled to eliminate sharp edges and increase strength and rigidity. Structure on the rear shall allow mounting to common 36" x 62" fan style supports. Face of the backboard shall be perforated in all areas except on official-sized shooter's square. Backboard shall accept rims with a 5" x 4" hole pattern and be manufactured in the USA. Backboard shall carry a 10-year limited warranty and have a shipping weight of approximately 160#.



PRODUCT SPECIFICATION

BA472PC PERFORATED RECTANGULAR STEEL BACKBOARD

REVISED 7/1/17